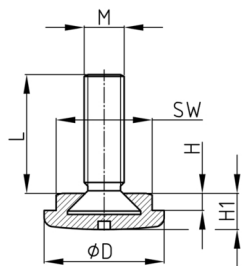


### Product Group KL

Adjustable screws with round plastic basemade of PA with moulded hexagon, thread bolt overmoulded

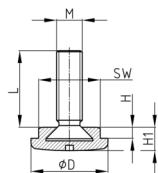


#### Standard Colours

- black

#### Material

- Thread: zinc-plated steel
- Base: Polyamide (PA)



#### Product options on inquiry

- Further thread lengths/sizes
- Stainless steel screws
- Hexagon socket in thread end

Order Number	D	H	H1	L	M	WAF
	mm	mm	mm	mm		mm
KL 25 / M8x20	25	4,5	9	18	M8	19
KL 25 / M8x30	25	4,5	9	25,5	M8	19
KL 25 / M8x40	25	4,5	9	36	M8	19
KL 25/ M8x50	25	4,5	9	46	M8	19
KL 25 / M10x20	25	5	9	17	M10	19
KL 25 / M10x30	25	5	9	25	M10	19
KL 25 / M10x40	25	5	9	34,5	M10	19
KL 25 / M10x50	25	5	9	45	M10	19
KL 30/ M8x20	30	4,5	9	15,5	M8	24
KL 30 / M8x30	30	4,5	9	26,5	M8	24
KL 30 / M8x40	30	4,5	9	36,5	M8	24
KL 30 / M8x50	30	4,5	9	45	M8	24
KL 30 / M10x20	30	4,5	9	17	M10	24
KL 30 / M10x30	30	4,5	9	25	M10	24
KL 30 / M10x40	30	4,5	9	34,5	M10	24
KL 30 / M10x50	30	4,5	9	45	M10	24