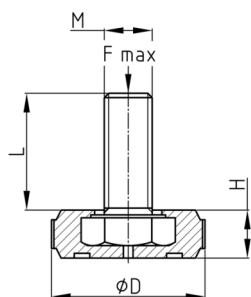


Product Group 41

Adjusting screws with knurled plastic base made of PA and overmoulded threaded bolt

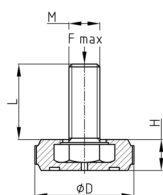


Standard Colours

- black

Material

- Thread: zinc-plated steel
- Base: Polyamide (PA)



- The axial, static foot load applies to a perfectly level standing surface.

Product options on inquiry

- Further thread lengths/sizes
- Stainless steel screws
- Hexagon socket in thread end
- Plastic base in special colours according to RAL-System

Order Number	D	F max.	H	L	M
	mm	kg	mm	mm	
41-M8x20	32	400	10,5	20	M8
41-M8x25	32	400	10,5	25	M8
41-M8x30	32	400	10,5	30	M8
41-M8x40	32	400	10,5	40	M8
41-M8x50	32	400	10,5	50	M8
41-M10x16	32	600	10,5	16	M10
41-M10x25	32	600	10,5	25	M10
41-M10x30	32	600	10,5	30	M10
41-M10x40	32	600	10,5	40	M10
41-M10x50	32	600	10,5	50	M10
41-M10x60	32	600	10,5	60	M10
41-M10x70	32	600	10,5	70	M10
41-M10x80	32	600	10,5	80	M10
41-M10x90	32	600	10,5	90	M10
41-M10x100	32	600	10,5	100	M10