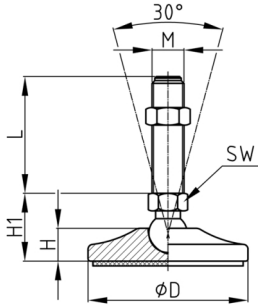


Product Group MFSV

Articulated machine feet made of painted steel base, zinc-plated steel thread and antislip pad (A)

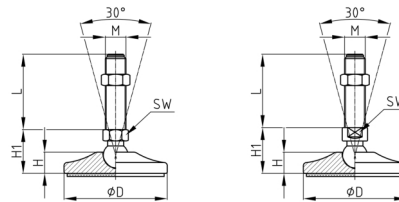


Standard Colours

- daffodil yellow RAL 1007

Material

- Thread: zinc-plated steel
- Base: painted steel
- Antislip pad: NBR 70 Shore



Product information

- Depending on the size of the thread or the foot diameter, the machine foot is provided with a chamfer on both sides or with a hexagon as a spanner flat.
- The machine foot can compensate for uneven floors up to 30°.
- The load capacity of the screw (buckling length!) may be less than indicated in the table.
- Palletising machines, conveyor systems, automation technology

Product options on inquiry

- Delivery with additional steel nut possible.

D	F max.	H	H1	M	WAF	25	50	75	100	125	150	175	200	225	250
mm	kg	mm	mm		mm	mm	mm	mm	mm	mm	mm	mm	mm	mm	mm
50	1500	16	28	M10	14	x	x	x	x	x					
50	1500	16	28	M12	14	x	x	x	x	x					
50	1500	16	28	M14	14	x	x	x	x	x					
65	2000	17	30	M14	16		x	x	x	x	x				
65	2000	17	30	M16	16		x	x	x	x	x	x			
80	3000	19,5	33	M16	16		x	x	x	x	x	x	x		
80	3000	19,5	36	M20	17			x	x	x	x	x	x	x	
100	3500	20	43	M16	20		x	x	x	x	x	x	x		
100	4500	20	43	M20	20			x	x	x	x	x	x	x	x
100	5500	20	44	M24	20			x	x	x	x	x	x	x	x
120	3500	23	46	M16	20		x	x	x	x	x	x			
120	4500	23	46	M20	20			x	x	x	x	x	x	x	x
120	5500	23	47	M24	20			x	x	x	x	x	x	x	x
120	6500	23	47	M30	26				x	x	x	x	x	x	x

Ordering example

- Group + D + M + Thread Length ---> MFSV 50 M10x 25 (A)