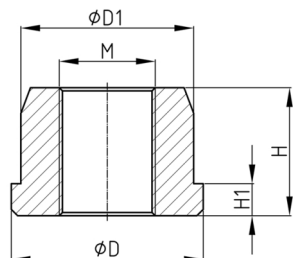


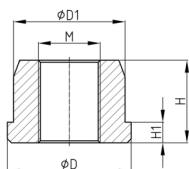
Product Group MFTA

Stainless steel bush, part of MFTE



Material

- AISI 304 (A2)



Product information

- Stainless steel bush type MFTA is a part from the machine foot type MFTE. Please look at product group MFTE/ MFTB and MFTD.
- Pharmaceutical industry, food industry, beverage industry, dairies, chemical industry

Product options on inquiry

- Bush made of stainless steel AISI 316 (A4)

Order Number	D	D1	H	H1	M
	mm	mm	mm	mm	
MFTA 40x35 / M20	40	32	35	5	M20
MFTA 40x35 / M24	40	32	35	5	M24
MFTA 50x30 / M24	50	45	30	10	M24
MFTA 50x30 / M30	50	45	30	10	M30
MFTA 60x25 / M20	60	54	25	10	M20
MFTA 60x30 / M24	60	54	30	10	M24
MFTA 60x30 / M30	60	54	30	10	M30
MFTA 60x50 / M40	60	54	50	10	M40
MFTA 80x25 / M24	80	75	25	10	M24
MFTA 80x30 / M30	80	75	30	10	M30
MFTA 80x40 / M40	80	75	40	10	M40