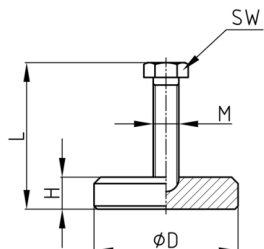


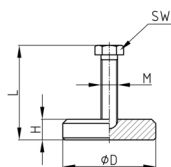
Product Group MFTZ

Machine feet made of zinc-plated steel base and browned steel screw



Material

- Screw: steel browned
- Base: zinc-plated steel



Product information

- The machine foot has a free screw laying on a base. Regulation from the top.
- The load capacity of the screw (buckling length!) may be less than indicated in the table.
- Machine tools, cutting machines, woodworking machines

| Order Number | D | F | H | L | M | W |
|------------------|----|---------|----|----|-------|-------|
| | mm | max. kg | mm | mm | mm | AF mm |
| MF 90 / M1 6x 94 | 90 | 35 | 20 | 94 | M1 24 | 24 |
| TZ 90 | 90 | 35 | 20 | 10 | M1 24 | 24 |
| M1 6x 10 4 | | 00 | | 4 | 6 | |