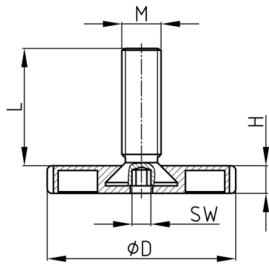


Product Group KT

Adjusting screws with knurled plastic base made of PA and overmoulded threaded bolt

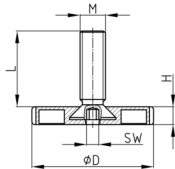


Standard Colours

- black

Material

- Thread: zinc-plated steel
- Base: Polyamide (PA)



| Order Number | D | H | L | M | WAF |
|----------------|----|----|------|-----|-----|
| | mm | mm | mm | | mm |
| KT 50 / M8x20 | 50 | 8 | 17 | M8 | 5 |
| KT 50 / M8x30 | 50 | 8 | 27 | M8 | 5 |
| KT 50 / M8x40 | 50 | 8 | 37 | M8 | 5 |
| KT 50 / M8x50 | 50 | 8 | 47 | M8 | 5 |
| KT 50 / M8x60 | 50 | 8 | 57 | M8 | 5 |
| KT 50 / M10x20 | 50 | 8 | 15,5 | M10 | 5 |
| KT 50 / M10x30 | 50 | 8 | 25,5 | M10 | 5 |
| KT 50 / M10x40 | 50 | 8 | 35,5 | M10 | 5 |
| KT 50 / M10x50 | 50 | 8 | 45,5 | M10 | 5 |
| KT 50 / M10x60 | 50 | 8 | 55,5 | M10 | 5 |
| KT 55 / M8x20 | 55 | 8 | 17 | M8 | 5 |
| KT 55 / M8x25 | 55 | 8 | 22 | M8 | 5 |
| KT 55 / M8x30 | 55 | 8 | 27 | M8 | 5 |
| KT 55 / M8x40 | 55 | 8 | 37 | M8 | 5 |
| KT 55 / M8x50 | 55 | 8 | 47 | M8 | 5 |
| KT 55 / M8x60 | 55 | 8 | 57 | M8 | 5 |
| KT 55 / M10x20 | 55 | 8 | 15,5 | M10 | 5 |
| KT 55 / M10x30 | 55 | 8 | 25,5 | M10 | 5 |
| KT 55 / M10x40 | 55 | 8 | 35,5 | M10 | 5 |
| KT 55 / M10x50 | 55 | 8 | 45,5 | M10 | 5 |
| KT 55 / M10x60 | 55 | 8 | 55,5 | M10 | 5 |
| KT 58 / M8x20 | 58 | 8 | 17 | M8 | 5 |
| KT 58 / M8x30 | 58 | 8 | 27 | M8 | 5 |
| KT 58 / M8x40 | 58 | 8 | 37 | M8 | 5 |
| KT 58 / M8x50 | 58 | 8 | 47 | M8 | 5 |



Walter Bethke GmbH & Co. KG

Technische Kunststoff - und Hybridprodukte

| Order Number | D | H | L | M | WAF |
|----------------|----|----|------|-----|-----|
| | mm | mm | mm | | mm |
| KT 58 / M8x60 | 58 | 8 | 57 | M8 | 5 |
| KT 58 / M10x20 | 58 | 8 | 15,5 | M10 | 5 |
| KT 58 / M10x30 | 58 | 8 | 25,5 | M10 | 5 |
| KT 58 / M10x40 | 58 | 8 | 35,5 | M10 | 5 |
| KT 58 / M10x50 | 58 | 8 | 45,5 | M10 | 5 |
| KT 58 / M10x60 | 58 | 8 | 55,5 | M10 | 5 |
| KT 60 / M8x20 | 60 | 8 | 17 | M8 | 5 |
| KT 60 / M8x30 | 60 | 8 | 27 | M8 | 5 |
| KT 60 / M8x40 | 60 | 8 | 37 | M8 | 5 |
| KT 60 / M8x50 | 60 | 8 | 47 | M8 | 5 |
| KT 60 / M8x60 | 60 | 8 | 57 | M8 | 5 |
| KT 60 / M10x20 | 60 | 8 | 15,5 | M10 | 5 |
| KT 60 / M10x30 | 60 | 8 | 25,5 | M10 | 5 |
| KT 60 / M10x40 | 60 | 8 | 35,5 | M10 | 5 |
| KT 60 / M10x50 | 60 | 8 | 45,5 | M10 | 5 |
| KT 60 / M10x60 | 60 | 8 | 55,5 | M10 | 5 |
| KT 63 / M8x20 | 63 | 8 | 17 | M8 | 5 |
| KT 63 / M8x30 | 63 | 8 | 27 | M8 | 5 |
| KT 63 / M8x40 | 63 | 8 | 37 | M8 | 5 |
| KT 63 / M8x50 | 63 | 8 | 47 | M8 | 5 |
| KT 63 / M8x60 | 63 | 8 | 57 | M8 | 5 |
| KT 63 / M10x20 | 63 | 8 | 15,5 | M10 | 5 |
| KT 63 / M10x30 | 63 | 8 | 25,5 | M10 | 5 |
| KT 63 / M10x40 | 63 | 8 | 35,5 | M10 | 5 |
| KT 63 / M10x50 | 63 | 8 | 45,5 | M10 | 5 |
| KT 63 / M10x60 | 63 | 8 | 55,5 | M10 | 5 |