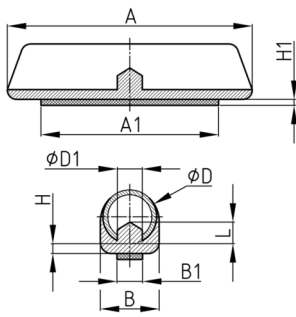


### Product Group KSGSLF

Clamping shell glides made of PP with welded-on felt sliding surface for round tubes

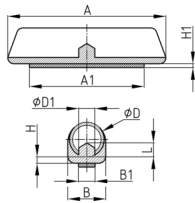


#### Standard Colours

- black
- uncoloured

#### Material

- Base body: Polypropylene (PP)
- Slide base: felt



#### Product options on inquiry

- Special colours
- Further sizes

Order Number	A	A1	B	B1	D	D1	H	H1	L
	mm	mm	mm	mm	mm	mm	mm	mm	mm
KSGSLF 50x13 / 10-11	50	42	13	6	10-11	3,8	3	1	2,5
KSGSLF 50x13 / 12-13	50	42	14	6	12-13	4,5	3	1	2,5
KSGSLF 50x13 / 13-14	50	42	16	6	13-14	4,5	3	1	2,5
KSGSLF 50x13 / 15-16	50	42	18	6	15-16	4,5	3	1	2,5