

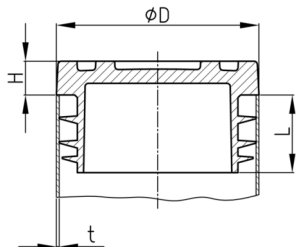


Walter Bethke GmbH & Co. KG

Technische Kunststoff - und Hybridprodukte

Product Group GLRS

Furniture feet made of non-slip TPE, can be combined with product group GLR

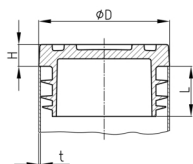


Standard Colours

- black

Material

- Base body: elastic thermoplast (TPE)



- Please note that the sliding roller GLR and the product group GLRS are optimally matched in terms of dimensions and material selection.

Order Number	D	H	L	t
	mm	mm	mm	mm
GLRS 32x0,8 - 2,5	32	7	12	0,8-2,5
GLRS 38x1,5 - 2	38	10	20	1,5-2