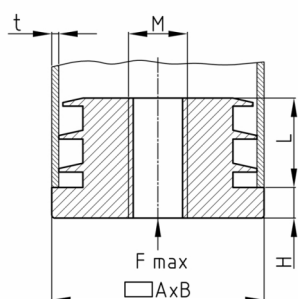


Product Group RAF

Threaded plugs made of PP for rectangular tubes with injection moulded plastic thread

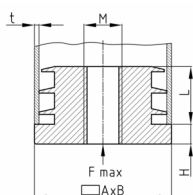


Standard Colours

- black

Material

- Polypropylene (PP)



• *) = The plugs can also be used up to a wall thickness of 2 mm. We recommend checking this before installation.

Order Number	A	B	F max.	H	L	M	t
	mm	mm	kg	mm	mm		mm
RAF 30x20	30	20	50	6	19	M10	1,5-2
RAF 35x20 *	35	20	50	6	19	M10	1-1,5
RAF 40x20	40	20	50	6	19	M10	1,5-2
RAF 50x20 *	50	20	50	6	19	M10	1-1,5
RAF 50x25 *	50	25	50	6	22	M10	1-1,5
RAF 60x20 *	60	20	50	6	19	M10	1-1,5