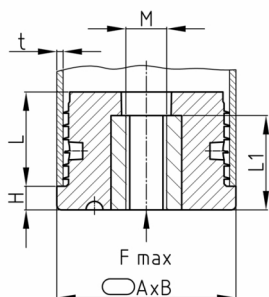


Product Group OG

Threaded plugs made of PA for flat oval tubes with injected high nut

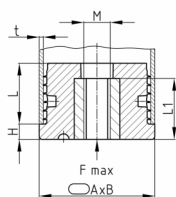


Standard Colours

- black RAL 9005

Material

- Base body: Polyamide (PA)
- Thread: zinc-plated steel



Product information

- The plugs are intended for use in pipes or equivalent bores with free passage corresponding to the clear nominal width of at least shaft length.
- For technical production reasons, a residual sprue may exceed the shaft length.

| Order Number | A | B | F max. | H | L | L1 | M | t |
|-------------------------|----|----|--------|----|------|----|-----|-------|
| | mm | mm | kg | mm | mm | mm | | mm |
| OG 30x15x1 / M8x20 | 30 | 15 | 300 | 5 | 19,5 | 20 | M8 | 1 |
| OG 30x15x1,5 / M8x20 | 30 | 15 | 300 | 5 | 19,5 | 20 | M8 | 1,5 |
| OG 35x20x1,5-2 / M8x20 | 35 | 20 | 300 | 5 | 19,5 | 20 | M8 | 1,5-2 |
| OG 35x20x1,5-2 / M10x20 | 35 | 20 | 300 | 5 | 19,5 | 20 | M10 | 1,5-2 |
| OG 38x20x1,5-2 / M8x20 | 38 | 20 | 300 | 5 | 19,5 | 20 | M8 | 1,5-2 |
| OG 38x20x1,5-2 / M10x20 | 38 | 20 | 300 | 5 | 19,5 | 20 | M10 | 1,5-2 |
| OG 40x20x1,5-2 / M8x20 | 40 | 20 | 300 | 5 | 19,5 | 20 | M8 | 1,5-2 |
| OG 40x20x1,5-2 / M10x20 | 40 | 20 | 300 | 5 | 19,5 | 20 | M10 | 1,5-2 |