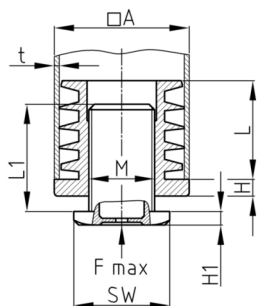


Product Group VJ

Adjusting plugs made of PA 6 for square tubes with one piece outer body and injected thread

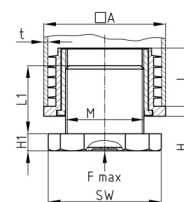
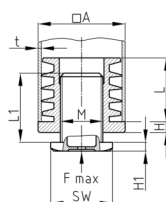


Standard Colours

- black RAL 9005

Material

- Polyamide 6 (PA 6)



• The specified axial, static load capacity refers to a screw turned out 10 mm and resting on the full surface. • Adjusting plugs are not suitable as load gliders. • Adjusting plugs are not suitable for dynamic load. • The feet must be adjusted in an unloaded state.

• Your searched size / design is not included? - Please ask our sales team!

• *) = The lamella shape of the nut can be closed or interrupted

• ***) = from Ø 60 mm supplied with mounted threaded shell

• Please observe the material hints for polyamide (PA).

Product options on inquiry

• Further sizes

• Other special productions

Order Number	A	F max.	H	H1	L	L1	M	WAF	t
	mm	kg	mm	mm	mm	mm		mm	mm
VJ 20x20x1,5-2/M10x25 /6k	20	100	5	4	16,7	24	M10	20	1,5-2
VJ 22x22x1,5-2/M10x25 /6k	22	100	5	4	16,7	24	M10	20	1,5-2
VJ 25x25x1-1,5/M16x25 /8k	25	150	5	5	20	22	M16	24	1-1,5
VJ 25x25x1,5-2/M16x25 /8k	25	150	5	5	20	22	M16	24	1,5-2
VJ 25x25x1-1,5/M16x60 /8k	25	150	5	5	20	60	M16	24	1-1,5
VJ 25x25x1,5-2/M16x60 /8k	25	150	5	5	20	60	M16	24	1,5-2
VJ 30x30x1-1,5/M22x25 /8k	30	300	5	5	19,5	29	M22	28	1-1,5
VJ 30x30x1,5-2/M22x25 /8k *	30	300	5	5	19,5	29	M22	28	1,5-2
VJ 30x30x1-1,5/M22x60 /8k	30	300	5	5	19,5	60	M22	28	1-1,5
VJ 30x30x1,5-2/M22x60 /8k *	30	300	5	5	19,5	60	M22	28	1,5-2
VJ 35x35x1,5-2/M22x25 /8k	35	300	5	5	29,3	29	M22	28	1,5-2
VJ 35x35x2-2,5/M22x25 /8k	35	300	5	5	29,3	29	M22	28	2-2,5
VJ 35x35x1,5-2/M22x60 /8k	35	300	5	5	29,3	60	M22	28	1,5-2
VJ 35x35x2-2,5/M22x60 /8k	35	300	5	5	29,3	60	M22	28	2-2,5
VJ 40x40x1,5-2/M22x25 /8k	40	300	5	5	29,3	29	M22	28	1,5-2
VJ 40x40x2-2,5/M22x25 /8k	40	300	5	5	29,3	29	M22	28	2-2,5
VJ 40x40x1,5-2/M22x60 /8k	40	300	5	5	29,3	60	M22	28	1,5-2
VJ 40x40x2-2,5/M22x60 /8k	40	300	5	5	29,3	60	M22	28	2-2,5



Walter Bethke GmbH & Co. KG

Technische Kunststoff - und Hybridprodukte

Order Number	A	F max.	H	H1	L	L1	M	WAF	t
	mm	kg	mm	mm	mm	mm		mm	mm
VJ 45x45x1,5-2/M30x30 /8k	45	300	5	5	29,3	31	M30	41	1,5-2
VJ 45x45x1,5-2/M30x60 /8k	45	300	5	5	29,3	60	M30	41	1,5-2
VJ 50x50x1,5-2/M30x30 /8k	50	300	5	5	29,3	31	M30	41	1,5-2
VJ 50x50x2-2,5/M30x30 /8k	50	300	5	5	29,3	31	M30	41	2-2,5
VJ 50x50x1,5-2/M30x60 /8k	50	300	5	5	29,3	60	M30	41	1,5-2
VJ 50x50x2-2,5/M30x60 /8k	50	300	5	5	29,3	60	M30	41	2-2,5
VJ 60x60x1,5-2 /S42x2x40/12k ***	60	175	6	10	34,8	37	S42x2	58	1,5-2
VJ 60x60x1,5-2/S42x2x80/12k ***	60	175	6	10	34,8	80	S42x2	58	1,5-2