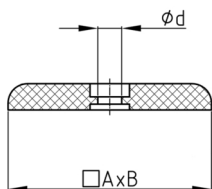


### Product Group UGS/RE

Square universal glides with PTFE gliding surface for fastening with a screw

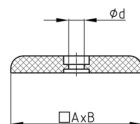


#### Standard Colours

- grey

#### Material

- Base body: rubber / EVAC
- Slide base: Polytetrafluorethylene (PTFE)



#### Product information

- Very good noise damping through rubber- / EVAC-buffers in the gliding insert.
- Minimal ground friction due to PTFE - gliding base surface
- Well suited for textile/carpet floors
- The floor glider is conditionally suitable for smooth floors (unintentional slipping of the chair - to be tested by the user).
- The abrasion of the sliding surface depends on the condition of the floor (surface, soiling of the floor, etc.) and the load on the chair (must be tested by the user, the manufacturer cannot provide any guarantee).

Order Number	A	B	d ca.
	mm	mm	
UGS 22x22 PTFE	22	22	4,3
UGS 25x25 PTFE	25	25	4,3
UGS 30x30 PTFE	30	30	4,3