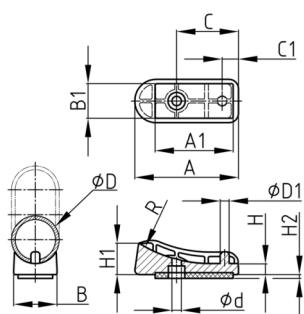


### Product Group SGRX

Shell glides made of polyamide for tube-based cantilever and skid-base chairs with diverse bending radii

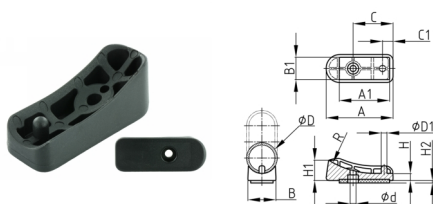


#### Standard Colours

- black RAL 9005

#### Material

- Polyamide 6 (PA 6)



- Safe positioning and fixing via two frame bores - only one connecting element required.

#### Product options on inquiry

- Special colours and materials (pricing, minimum quantities, set-up costs)

Order Number	A	B	C	C1	d	D	D1	H	H1 ca.	R
	mm	mm	mm	mm	mm	mm	mm	mm	mm	mm
SGRX 25/60 R63,5	60	22	35	9	5,2	25	5,7	7	21	63,5
SGRX 25/60 R75	60	22	35	9	5,2	25	5,7	7	21	75
SGRX 30/64 R80	65	27,5	39	9,5	5,9	30	5,6	7	20	80
SGRX 30/64 R85	65	27,5	39	9,5	5,9	30	5,6	7	19,5	85