

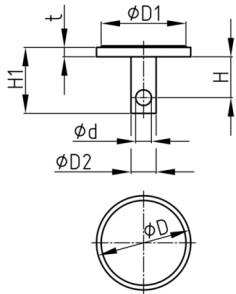


# Walter Bethke GmbH & Co. KG

Technische Kunststoff - und Hybridprodukte

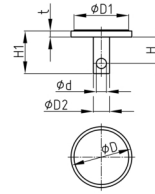
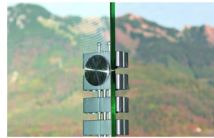
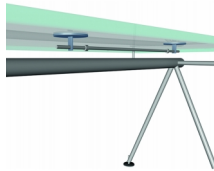
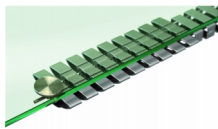
## Product Group KBKGLUE

Stainless steel glass mounting with radial twist structure and high strength 3M-glue dot



### Material

- Stainless steel



### Product information

- Suitable for permanent bonding on glass, smooth surfaces, stone, wood, metal surfaces and (glass-) facades.
- If required, also order KBKZ2A mounting rod and KBKZ2C mounting sleeve.

Order Number	D	D1	D2	d	H	H1	t
	mm	mm	mm	mm	mm	mm	mm
KBK GLUE Glashalterung	35	30	8	5	13	21	3