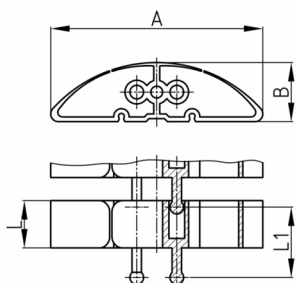


Product Group KBKPROSA

Elliptical cable chain set made of PP for cable feed to writing and working tables, including floor-outlet-adapter and table mounting

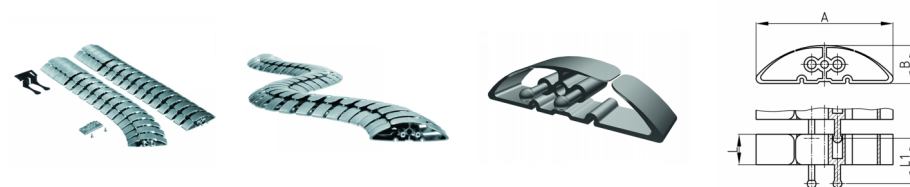


Standard Colours

- black
- white
- uncoloured-translucent
- silver

Material

- Polypropylene (PP)



Product information

- Flexible cable ducting system for horizontal and vertical cable ducting.
- As rigid cable channel with stainless steel assembly pole and fixing element "KBKPROZ1" or "KBKZ8S" for any assembly.
- The chain links arranged displaceable to each other.
- 2 connectors for optimal force transmission, especially torque, pressure- and transverse forces
- Two-chamber-system for separating data and power lines
- Closed centre channel to accommodate mounting rope "KBKZ2A" or hauling rope "KBKZ2B".
- Extended or pushed together, rigid laying of the cable routing chain especially suitable for wall, furniture, undertable and ceiling mounting.
- The pushed-together, rigidly laid cable guide chain is particularly suitable for busy passageways.
- Tool-free connection to all standard floor outlets by using "KBKZ10L / Clip-L Floor (PRO+CUB+CMX)".
- Tool-free and time saving installation of cables by zipper principle.
- Possibility to unthread the cables from the side
- 3-D movable and approx. 25 % lengthwise flexible
- Tool-free branching through distributors
- Compatible with cable chain "KBKCL", "KBKCUB", "KBKCMX" and "KBKFLII" (intermateable).
- Compatible with KBK Bridge
- Extensive range of adapters
- Complete packing in one box (assembled cable elements with desk fixing, floor outlet adapter and screw set)

Order Number	A	B	L	L1	Element(s)	For up to x cable
	mm	mm	mm	mm	piece(s)	piece(s)
KBKPRO SET-A 75 cm	90	24	20	29,5	24	30
KBKPRO SET-A 125 cm	90	24	20	29,5	42	30