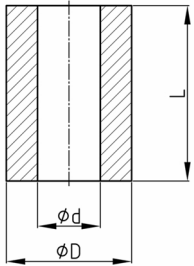


Produktgruppe 53

Distanzstücke aus Polyamid (D = 25 mm, d = 13 mm, L = 3-28 mm)

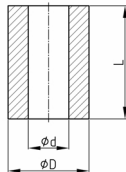
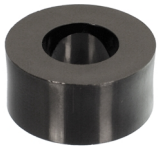


Standardfarben

- schwarz

Material

- Polyamid (PA)



| Bestellnummer | d | D | L | M |
|---------------|----|----|----|-----|
| | mm | mm | mm | |
| 53-0030 | 13 | 25 | 3 | M12 |
| 53-0040 | 13 | 25 | 4 | M12 |
| 53-0050 | 13 | 25 | 5 | M12 |
| 53-0060 | 13 | 25 | 6 | M12 |
| 53-0070 | 13 | 25 | 7 | M12 |
| 53-0080 | 13 | 25 | 8 | M12 |
| 53-0090 | 13 | 25 | 9 | M12 |
| 53-0100 | 13 | 25 | 10 | M12 |
| 53-0110 | 13 | 25 | 11 | M12 |
| 53-0120 | 13 | 25 | 12 | M12 |
| 53-0130 | 13 | 25 | 13 | M12 |
| 53-0140 | 13 | 25 | 14 | M12 |
| 53-0150 | 13 | 25 | 15 | M12 |
| 53-0160 | 13 | 25 | 16 | M12 |
| 53-0170 | 13 | 25 | 17 | M12 |
| 53-0180 | 13 | 25 | 18 | M12 |
| 53-0190 | 13 | 25 | 19 | M12 |
| 53-0200 | 13 | 25 | 20 | M12 |
| 53-0210 | 13 | 25 | 21 | M12 |
| 53-0220 | 13 | 25 | 22 | M12 |
| 53-0230 | 13 | 25 | 23 | M12 |
| 53-0240 | 13 | 25 | 24 | M12 |
| 53-0250 | 13 | 25 | 25 | M12 |
| 53-0260 | 13 | 25 | 26 | M12 |



Walter Bethke GmbH & Co. KG

Technische Kunststoff - und Hybridprodukte

| Bestellnummer | d | D | L | M |
|---------------|----|----|----|-----|
| | mm | mm | mm | |
| 53-0270 | 13 | 25 | 27 | M12 |
| 53-0280 | 13 | 25 | 28 | M12 |