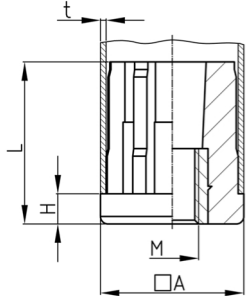


### Product Group VGMM

Thread inserts for square tubes with nickel-plated brass thread

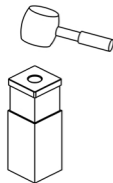
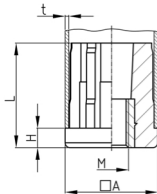


#### Standard Colours

- black

#### Material

- Base body: glass fibre reinforced Nylon
- Thread: brass nickel-plated



• For British or US pipe thickness systems, use this website to convert "gauge" to millimeter:  
[www.rapidtables.com/convert/length/inch-to-mm.htm](http://www.rapidtables.com/convert/length/inch-to-mm.htm)

Order Number	A	F max.	H	L	M	t
	mm	kg	mm	mm		mm
VGMM 30x30x1,5 / M10	30	550	6	33	M10	1,5
VGMM 30x30x1,5 / M12	30	550	6	33	M12	1,5
VGMM 30x30x1,5 / M14	30	550	6	33	M14	1,5
VGMM 30x30x1,5 / M16	30	550	6	33	M16	1,5
VGMM 35x35x1,5 / M10	35	700	8	43	M10	1,5
VGMM 35x35x1,5 / M12	35	700	8	43	M12	1,5
VGMM 35x35x1,5 / M14	35	700	8	43	M14	1,5
VGMM 35x35x1,5 / M16	35	700	8	43	M16	1,5
VGMM 40x40x1,5 / M10	40	800	8	43	M10	1,5
VGMM 40x40x1,5 / M12	40	800	8	43	M12	1,5
VGMM 40x40x1,5 / M14	40	800	8	43	M14	1,5
VGMM 40x40x1,5 / M16	40	800	8	43	M16	1,5
VGMM 40x40x1,5 / M20	40	800	8	43	M20	1,5
VGMM 40x40x2 / M10	40	800	8	43	M10	2
VGMM 40x40x2 / M12	40	800	8	43	M12	2
VGMM 40x40x2 / M14	40	800	8	43	M14	2
VGMM 40x40x2 / M16	40	800	8	43	M16	2
VGMM 40x40x2 / M20	40	800	8	43	M20	2
VGMM 50x50x1,5 / M12	50	950	10	55	M12	1,5
VGMM 50x50x1,5 / M14	50	950	10	55	M14	1,5
VGMM 50x50x1,5 / M16	50	950	10	55	M16	1,5
VGMM 50x50x1,5 / M20	50	950	10	55	M20	1,5



# Walter Bethke GmbH & Co. KG

Technische Kunststoff - und Hybridprodukte

---

Order Number	A	F max.	H	L	M	t
	mm	kg	mm	mm		mm
VGMM 50x50x2,5 / M12	50	950	10	55	M12	2,5
VGMM 50x50x2,5 / M14	50	950	10	55	M14	2,5
VGMM 50x50x2,5 / M16	50	950	10	55	M16	2,5
VGMM 50x50x2,5 / M20	50	950	10	55	M20	2,5