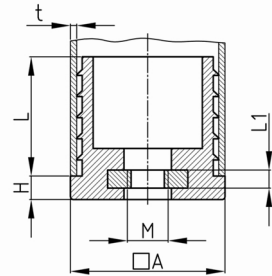


Product Group CG

Threaded inserts for square tubes with around injection-moulded metal thread (short)

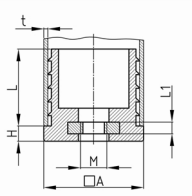


Standard Colours

- black

Material

- Base body: Polyethylene (PE)
- Thread: steel



- For British or US pipe thickness systems, use this website to convert "gauge" to millimeter: www.rapidtables.com/convert/length/inch-to-mm.htm
- Please consider our product groups pipe connectors RVBx and expander inserts EBx in the item category "Joining Elements".

Order Number	A	H	L	L1	M	t
	mm	mm	mm	mm		mm
CG 20x20 / M8	20	7	30	4	M8	1-2
CG 25x25 / M8	25	7	30	4	M8	1-2
CG 25x25 / M10	25	7	30	4	M10	1-2
CG 30x30 / M10	30	8	30	4	M10	1-2