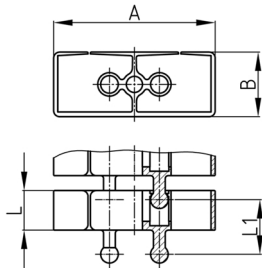


Product Group KBKFLIISA

Rectangular cable chain set for cable feed to writing and working tables, including floor-outlet-adapter and table mounting

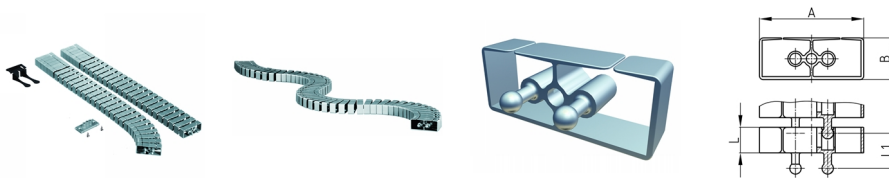


Standard Colours

- black
- white
- uncoloured-translucent
- silver

Material

- Polypropylene



Product information

- Flexible cable ducting system for horizontal and vertical cable ducting.
- Using different fixing elements arbitrarily assembled.
- Chain links arranged displaceable to each other
- 2 connectors for optimal force transmission, especially torque, pressure- and transverse forces
- Two-chamber-system for separating data and power lines
- Extended or pushed together, rigid laying of the cable routing chain especially suitable for wall, furniture, under-table and ceiling mounting.
- The pushed together, rigid installation of the cable guide chain is conditionally suitable for low-traffic passage areas.
- Tool-free connection to all traded floor outlets by using "KBKZ10S / Clip-S Floor (CL+ FLII)".
- Tool-free branching through distributors
- Optimized possibility for lateral squeeze-proof unthreading of the cables.
- 3-D movable and approx. 25 % lengthwise flexible
- Compatible with "KBKCUB", "KBKCMX", KBKPRO", "KBKCL" und "KBKFLII" (intermateable).
- Compatible with KBK Bridge
- Extensive range of adapters
- Complete packing in one box (assembled cable elements with desk fixing, floor outlet adapter and screw set)

Order Number	A	B	L	L1	Element(s)	For up to x cable
	mm	mm	mm	mm	piece(s)	piece(s)
KBKFLII SET-A 75 cm	55	22	14	19	38	20
KBKFLII SET-A 125 cm	55	22	14	19	65	20